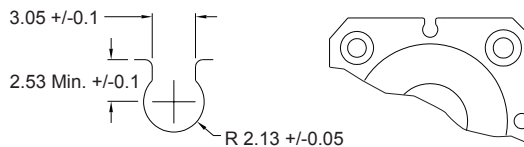
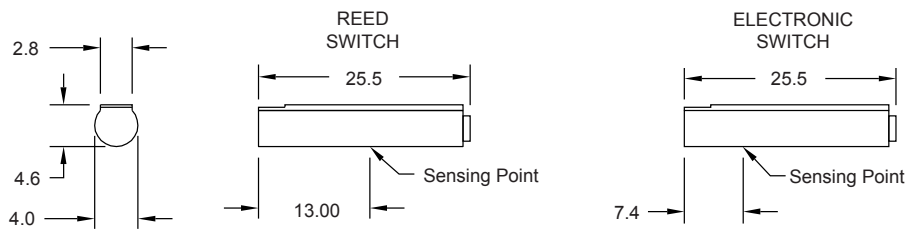
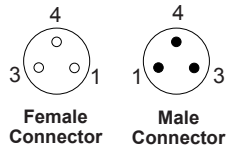
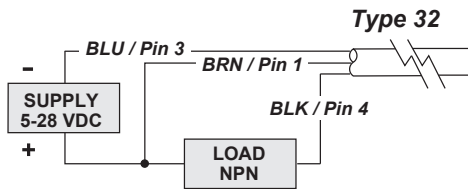
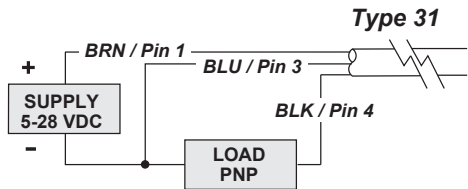
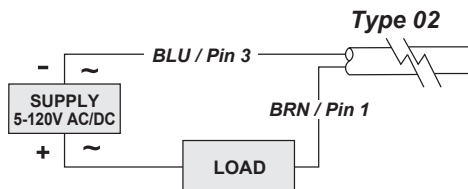


SERIES 9C TYPE 02, 31 & 32

Wiring Diagram



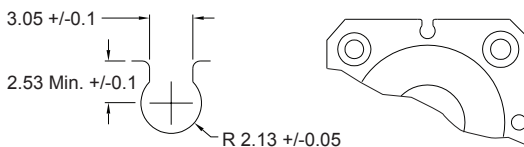
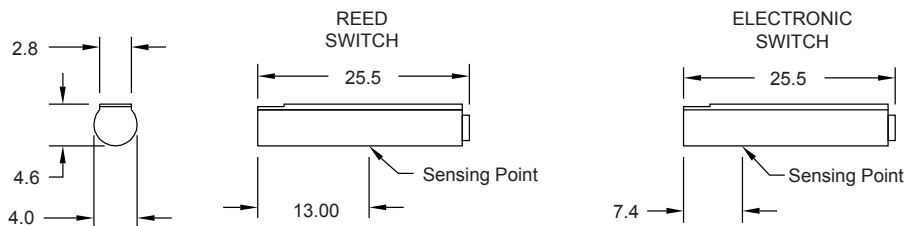
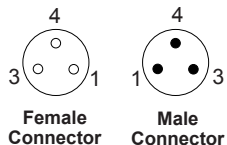
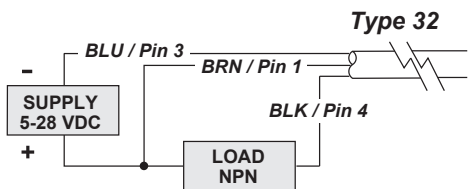
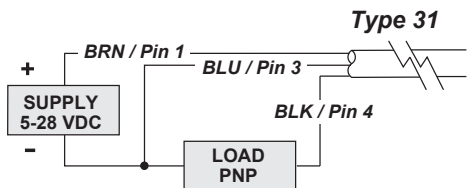
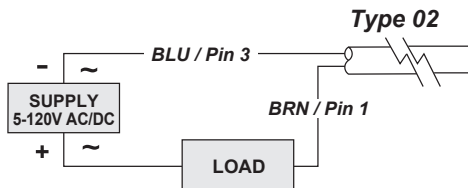
GROOVE DIMENSIONS

Switch Type	Description	Function	Switching Voltage	Switching Current	Switching Power	Voltage Drop	*Magnetic Sensitivity
02	Reed Switch & LED	Normally Open SPST	5-120V AC/DC 50/60 Hz	0.03 Amps Max.	4 watts Max.	2.5 Volts @ 40 mA DC	60 Ga.
31	Electronic for Reed Magnet, LED & Sourcing	Normally Open PNP	5-28 VDC	0.2 Amps Max.	4.8 watts Max.	.5 Volts @ 200 mA	40 Ga.
32	Electronic for Reed Magnet, LED & Sinking	Normally Open NPN	5-28 VDC	0.2 Amps Max.	4.8 watts Max.	.5 Volts @ 200 mA	40 Ga.

A56-1401 Rev. 01

SERIES 9C TYPE 02, 31 & 32

Wiring Diagram



GROOVE DIMENSIONS

Switch Type	Description	Function	Switching Voltage	Switching Current	Switching Power	Voltage Drop	*Magnetic Sensitivity
02	Reed Switch & LED	Normally Open SPST	5-120V AC/DC 50/60 Hz	0.03 Amps Max.	4 watts Max.	2.5 Volts @ 40 mA DC	60 Ga.
31	Electronic for Reed Magnet, LED & Sourcing	Normally Open PNP	5-28 VDC	0.2 Amps Max.	4.8 watts Max.	.5 Volts @ 200 mA	40 Ga.
32	Electronic for Reed Magnet, LED & Sinking	Normally Open NPN	5-28 VDC	0.2 Amps Max.	4.8 watts Max.	.5 Volts @ 200 mA	40 Ga.

A56-1401 Rev. 01