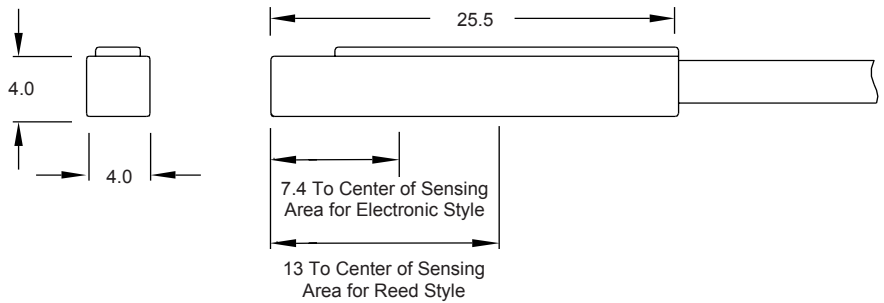
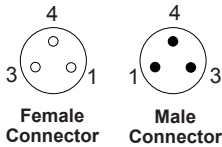
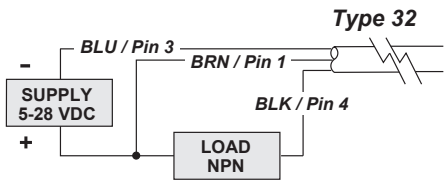
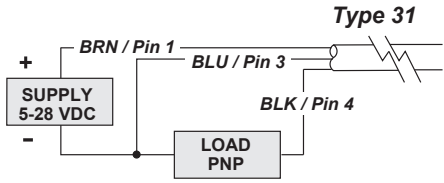
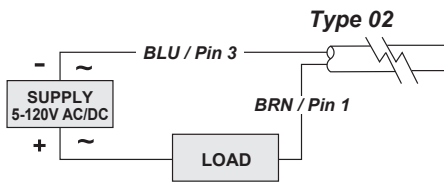


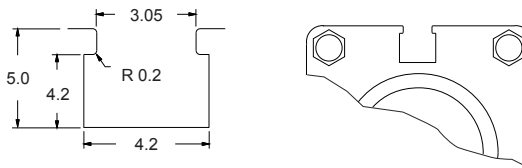
SERIES 9H TYPE 02, 31 & 32

Wiring Diagram



| Switch Type | Description | Function | Switching Voltage | Switching Current | Switching Power | Voltage Drop | *Magnetic Sensitivity |
|-------------|---|----------|-------------------|-------------------|-----------------|-----------------------|-----------------------|
| 02 | Reed Switch with Red LED | SPST | 5-120V AC/DC | 0.03 Amps Max. | 4 watts Max. | 2.5 Volts @ 100 mA DC | 60 Ga. |
| 31 | Electronic for Reed Magnet, with Grn LED & Sourcing | PNP | 5-28 VDC | 0.2 Amps Max. | 4.8 watts Max. | .5 Volts @ 200 mA | 40 Ga. |
| 32 | Electronic for Reed Magnet, with Red LED & Sinking | NPN | 5-28 VDC | 0.2 Amps Max. | 4.8 watts Max. | .5 Volts @ 200 mA | 40 Ga. |

*Minimum Gauss rating required for proper operation as measured on sensor surface.

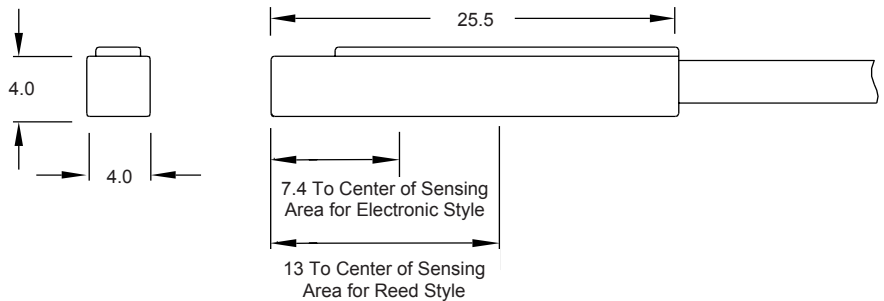
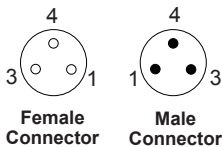
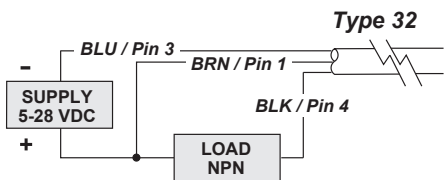
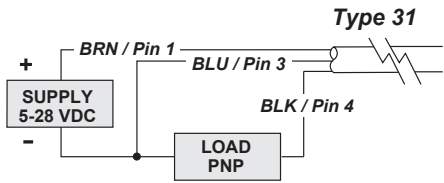
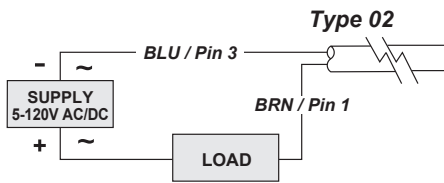


GROOVE DIMENSIONS

A56-1487 Rev.01

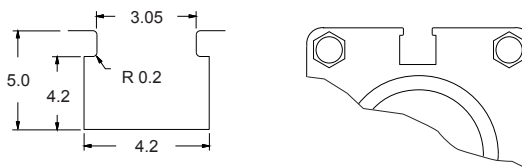
SERIES 9H TYPE 02, 31 & 32

Wiring Diagram



| Switch Type | Description | Function | Switching Voltage | Switching Current | Switching Power | Voltage Drop | *Magnetic Sensitivity |
|-------------|---|----------|-------------------|-------------------|-----------------|-----------------------|-----------------------|
| 02 | Reed Switch with Red LED | SPST | 5-120V AC/DC | 0.03 Amps Max. | 4 watts Max. | 2.5 Volts @ 100 mA DC | 60 Ga. |
| 31 | Electronic for Reed Magnet, with Grn LED & Sourcing | PNP | 5-28 VDC | 0.2 Amps Max. | 4.8 watts Max. | .5 Volts @ 200 mA | 40 Ga. |
| 32 | Electronic for Reed Magnet, with Red LED & Sinking | NPN | 5-28 VDC | 0.2 Amps Max. | 4.8 watts Max. | .5 Volts @ 200 mA | 40 Ga. |

*Minimum Gauss rating required for proper operation as measured on sensor surface.



GROOVE DIMENSIONS

A56-1487 Rev.01