

**canfield connector**  
8510 Foxwood Court  
Youngstown, Ohio 44514  
(330) 758-8299 Fax: (330) 758-8912  
www.canfieldconnector.com

## SERIES 9G

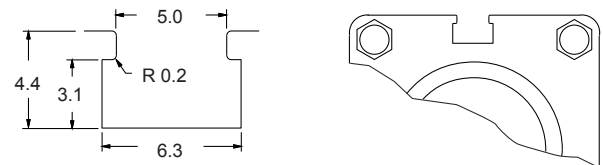
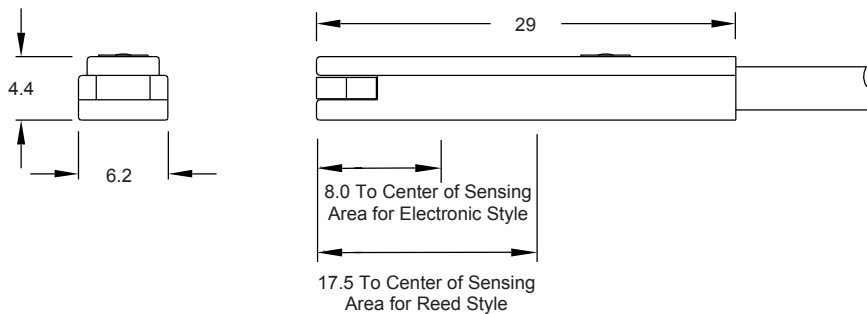
## REED & ELECTRONIC SENSORS FOR 6.3MM "T" SLOT APPLICATIONS

### General Description

The Canfield Connector 9G linear magnetic position sensor is designed to work with aluminum extrusion type actuators that have a 6.2mm X 4.4mm rectangular groove designed into the body. Available in reed or electronic versions, the 9G fits into commonly used sensor grooves. Standard connection to the sensor is provided by a 9 ft. PVC or 8mm quick connect male pigtail. The switch is water resistant and dust tight to IP-67.

### Dimensional Data

ALL DIMENSIONS ARE IN MILLIMETERS UNLESS OTHERWISE NOTED



GROOVE  
DIMENSIONS

### Technical Data

- Temperature Range: Operational from -10° to +70°C
- Shock: Operational up to 30G reed and up to 50G for electronic
- Vibration: Operational up to 9G reed and electronic
- All versions designed to meet NEMA 6 / IP67 specifications
- Sensitivity and Orientation: 40 gauss parallel (electronic)  
60 gauss parallel (reed)

### Features

- T-slot body to fit many popular linear actuators
- All encapsulated body resists environment and vibration
- Available in Reed NPN or PNP Electronic versions
- Reverse polarity protection
- Quick connect versions

## Ordering Information

9G10-000-□□□

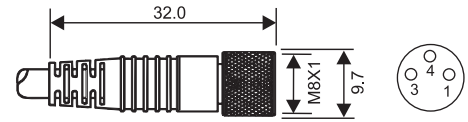
### Connection Options

- 0 - 9 ft PVC cable
- 3 - 8mm quick connect male pigtail\*

\*Mates with cordsets shown at right.

### Mating Cordsets

8mm female molded locking connectors



### Order part number

Brown = Pin 1  
Blue = Pin 3  
Black = Pin 4

RC08S-F0M030120 (2m length)  
RC08S-F0M030150 (5m length)

Switch Type	Description	Function	Switching Voltage	Switching Current	Switching Power	Voltage Drop	Magnetic Sensitivity
02	Reed Switch with Red LED	Normally Open SPST	5-120V AC/DC	0.03 Amps Max.	4 watts Max.	2.5 Volts @ 100 mA DC	60 Ga.
31	Electronic for Reed Magnet, with Grn LED & Sourcing	Normally Open PNP	5-28 VDC	0.2 Amps Max.	4.8 watts Max.	1.5 Volts @ 200 mA	40 Ga.
32	Electronic for Reed Magnet, with Red LED & Sinking	Normally Open NPN	5-28 VDC	0.2 Amps Max.	4.8 watts Max.	1.5 Volts @ 200 mA	40 Ga.

### Ordering Example:

9G10-000-002

9 ft. PVC cable, reed switch with red LED, SPST, 5 - 120V AC/DC 50/60 Hz

For convenience and faster shipping, this series is available in Can-Paks.

