

**canfield connector**  
8510 Foxwood Court  
Youngstown, Ohio 44514  
(330) 758-8299 Fax: (330) 758-8912  
www.canfieldconnector.com

## SERIES 9N

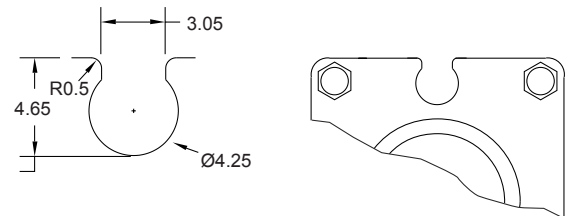
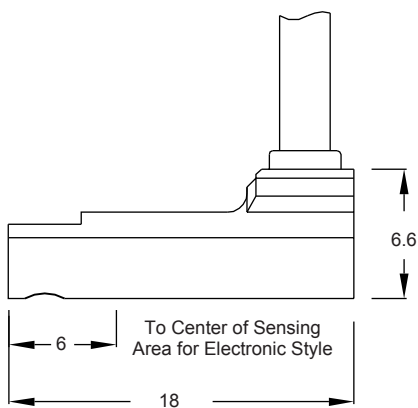
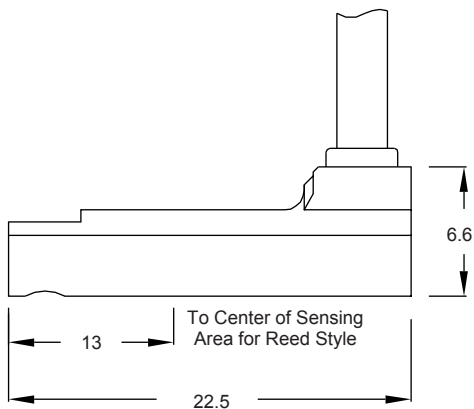
## REED & ELECTRONIC SENSORS FOR 4.25MM ROUND GROOVE APPLICATIONS

### General Description

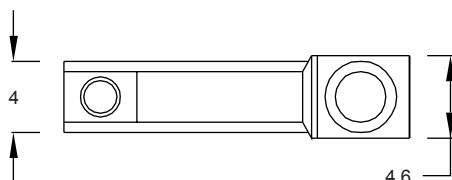
The Canfield Connector 9N is a right angle version of the popular 4.25mm round groove type switches commonly used in aluminum extrusion type linear actuators. The 9N features reed or electronic versions and are available in standard 9 ft. PVC or 8mm quick connect male pigtail. The 9N is IP-67 which makes it dust tight and water resistant.

### Dimensional Data

ALL DIMENSIONS ARE IN MILLIMETERS UNLESS OTHERWISE NOTED



GROOVE  
DIMENSIONS



### Features

- Small sensor fits most space requirements.
- Indicator light
- Corrosion and washdown resistant.
- Electronic sensing version (no moving parts)
- Reverse polarity protection
- CE approved
- AC/DC for reed versions, DC only for electronic

## Technical Data

- Temperature Range: Operational from -10° to +70°C
- Shock: Operational up to 30G reed and up to 50G for electronic
- Vibration: Operational up to 9G reed and electronic
- All versions designed to meet NEMA 6 / IP67 specifications
- Sensitivity and Orientation: 40 gauss parallel (electronic)  
60 gauss parallel (reed)

## Ordering Information

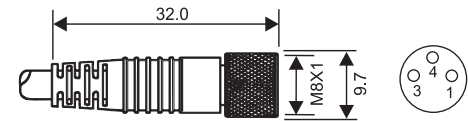
9N10-000-□□□

**Connection Options**  
0 - 9 ft PVC cable  
3 - 8mm quick connect male pigtail\*

\*Mates with cordsets shown at right.

### Mating Cordsets

8mm female molded locking connectors



### Order part number

Brown = Pin 1  
Blue = Pin 3  
Black = Pin 4

RC08S-F0M030120 (2m length)  
RC08S-F0M030150 (5m length)

| Switch Type | Description   | Function           | Switching Voltage | Switching Current | Switching Power | Voltage Drop         | *Magnetic Sensitivity |
|-------------|---|--------------------|-------------------|-------------------|-----------------|----------------------|-----------------------|
| 02          | Reed Switch with Red LED                            | Normally Open SPST | 5-120V AC/DC      | 0.03 Amps Max.    | 4 watts Max.    | 2.5 Volts @ 40 mA DC | 60 Ga.                |
| 31          | Electronic for Reed Magnet, with Grn LED & Sourcing | Normally Open PNP  | 5-28 VDC          | 0.2 Amps Max.     | 4.8 watts Max.  | .5 Volts @ 200 mA    | 40 Ga.                |
| 32          | Electronic for Reed Magnet, with Red LED & Sinking  | Normally Open NPN  | 5-28 VDC          | 0.2 Amps Max.     | 4.8 watts Max.  | .5 Volts @ 200 mA    | 40 Ga.                |

### Ordering Example:

9N10-000-002

9 ft. PVC cable, reed switch with red LED, SPST, 5 - 120V AC/DC 50/60 Hz

For convenience and faster shipping, this series is available in Can-Paks.

