



Model CRDV

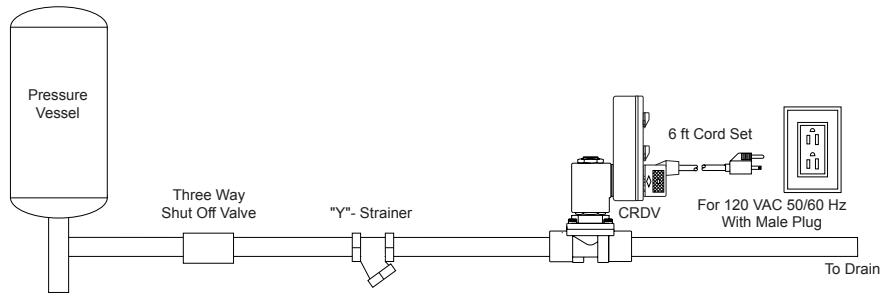
Application and Installation Guide

General Description

The model CRDV (condensation removal drain valve) automatically drains water from compressed air systems. Applications include air dryers, separators, coalescing filters and drop legs.

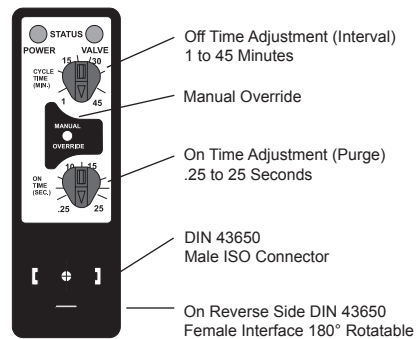
The installation should include a three way shut-off valve to facilitate future maintenance, and a "Y"-strainer to catch large particulates that can clog the CRDV orifice. The proper size and quality fittings should be used with ample inside diameters as not to restrict the flow to the CRDV. Adjustment of the timer purge time and purge interval allows for optimal system drainage. The schematic below depicts a typical CRDV installation.

Installation



Timer Adjustment

Sandwich Timer



Sandwich CRT - Adjust the timer by turning the dimple in the adjustment wheel to correspond to the numerical number value on the timer bezel.



Model CRDV

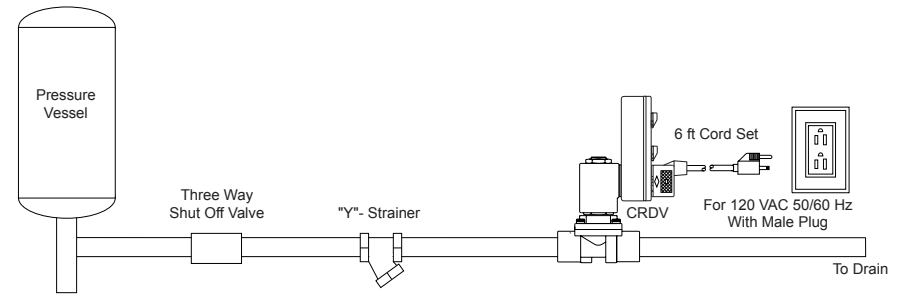
Application and Installation Guide

General Description

The model CRDV (condensation removal drain valve) automatically drains water from compressed air systems. Applications include air dryers, separators, coalescing filters and drop legs.

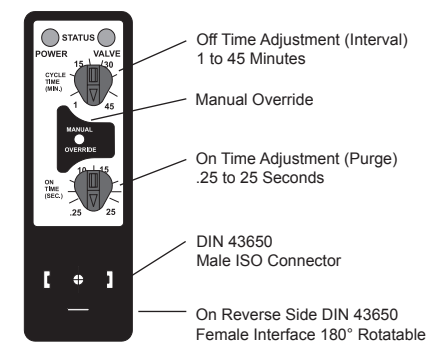
The installation should include a three way shut-off valve to facilitate future maintenance, and a "Y"-strainer to catch large particulates that can clog the CRDV orifice. The proper size and quality fittings should be used with ample inside diameters as not to restrict the flow to the CRDV. Adjustment of the timer purge time and purge interval allows for optimal system drainage. The schematic below depicts a typical CRDV installation.

Installation



Timer Adjustment

Sandwich Timer



Sandwich CRT - Adjust the timer by turning the dimple in the adjustment wheel to correspond to the numerical number value on the timer bezel.

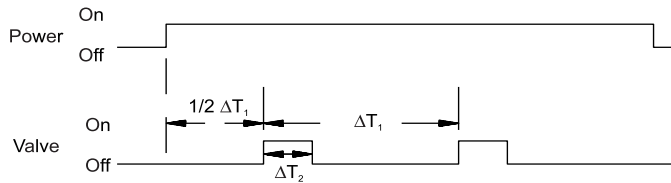


Model CRDV

Application and Installation Guide

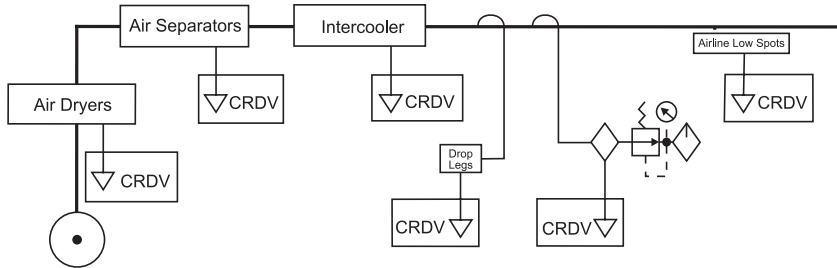
Timer Function

Upon application of power to the input terminals, the OFF cycle is initiated. At the end of the preset OFF time, the solenoid is energized and the on cycle begins. At the end of the preset ON time, power is removed from the solenoid and a new cycle begins. Cycling continues until power is removed from the input terminals.



ΔT_1 = Cycle Rate (1min. to 45 min.)
 ΔT_2 = Valve ON Time (.25 sec to 25 sec.)

Applications



Caution

Excessive use of pipe sealant can cause clogging and leakage. Please follow ASME standards for applying pipe sealant and tape. Do not use media, voltage or pressures other than that recommended by Spartan Scientific Inc. as valve malfunction could result. Misuse or misapplication of Spartan solenoid valves could cause serious bodily injury or property damage.

Warranty Information

Solenoid valves and all other products manufactured by Spartan are warranted by Spartan to be free from defects in material and workmanship for a period of 1 year from the date of purchase. Spartan's obligation under this warranty is limited to repair or replacement of the defective product or refund of the purchase price paid solely at the discretion of Spartan and provided such defective product is returned to Spartan freight prepaid and upon examination by Spartan such product is found defective. This warranty shall be void in the event that the product has been subject to misuse, misapplication, improper maintenance, modification or tampering. This warranty is expressed in lieu of all other warranties, expressed or implied from Spartan Scientific, Inc., representatives or employees.

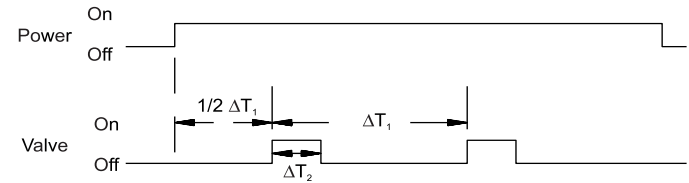


Model CRDV

Application and Installation Guide

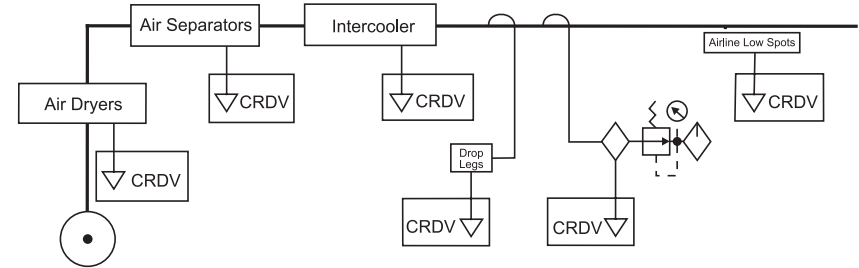
Timer Function

Upon application of power to the input terminals, the OFF cycle is initiated. At the end of the preset OFF time, the solenoid is energized and the on cycle begins. At the end of the preset ON time, power is removed from the solenoid and a new cycle begins. Cycling continues until power is removed from the input terminals.



ΔT_1 = Cycle Rate (1min. to 45 min.)
 ΔT_2 = Valve ON Time (.25 sec to 25 sec.)

Applications



Caution

Excessive use of pipe sealant can cause clogging and leakage. Please follow ASME standards for applying pipe sealant and tape. Do not use media, voltage or pressures other than that recommended by Spartan Scientific Inc. as valve malfunction could result. Misuse or misapplication of Spartan solenoid valves could cause serious bodily injury or property damage.

Warranty Information

Solenoid valves and all other products manufactured by Spartan are warranted by Spartan to be free from defects in material and workmanship for a period of 1 year from the date of purchase. Spartan's obligation under this warranty is limited to repair or replacement of the defective product or refund of the purchase price paid solely at the discretion of Spartan and provided such defective product is returned to Spartan freight prepaid and upon examination by Spartan such product is found defective. This warranty shall be void in the event that the product has been subject to misuse, misapplication, improper maintenance, modification or tampering. This warranty is expressed in lieu of all other warranties, expressed or implied from Spartan Scientific, Inc., representatives or employees.